



**Armstrong**

PREMIUM VINYL SHEET FLOORING

**VINYL FLOORING** / Laminate Flooring / Hardwood Flooring

Our products include two important elements you won't see on the surface:

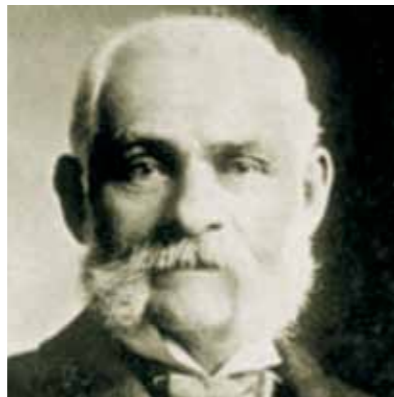
# TRUST & INTEGRITY

When he founded his company in 1860, Thomas Armstrong would not have envisaged an international leader in its field with an unbroken line of product development and innovation spanning 150 years.

A pioneering entrepreneur with strong principles, he founded his business on trust and integrity; he realised his people and his customers were the reasons his business existed and he replaced the old way of doing business: 'Caveat emptor' – 'Let the buyer beware' – with his own business philosophy: 'Let the buyer have faith'.

Today, Armstrong has a global manufacturing footprint and is the only Australian producer of resilient vinyl flooring, with two plants and a skilled workforce of nearly 200.

We have won numerous environmental awards through our commitment to sustainable manufacturing, and our flooring solutions are characterised by their natural beauty and exceptional durability – and, true to the principles of Thomas Armstrong, they are backed by the industry's most comprehensive customer service and warranties.



Thomas Armstrong founded the company on the principles of trust and integrity 150 years ago.



CUSHIONSTEP GOOD  
Nolt Creek – Fascination



This brochure is printed on recycled paper that is Certified Carbon Neutral by The Carbon Reduction Institute (CRI) in accordance with the global Greenhouse Protocol and ISO14040 framework.



## CONTENTS

Duality Premium Plus	4
Duality Premium Plus Range	6
CushionStep	8
CushionStep Range	10
Warranty Guidelines	12
Performance Data	13
Care and Maintenance	14
Installation Guidelines	15

Hardworking style.

# DUALITY PREMIUM PLUS

Stone and wood flooring comes at a price, on your wallet and your senses. Duality™ Premium Plus looks real but feels more comfortable underfoot and is quieter. This special vinyl flooring is ultra-durable thanks to an innovative fibreglass structure and is beautifully easy to maintain.

#### REALISTIC LOOK AND FEEL

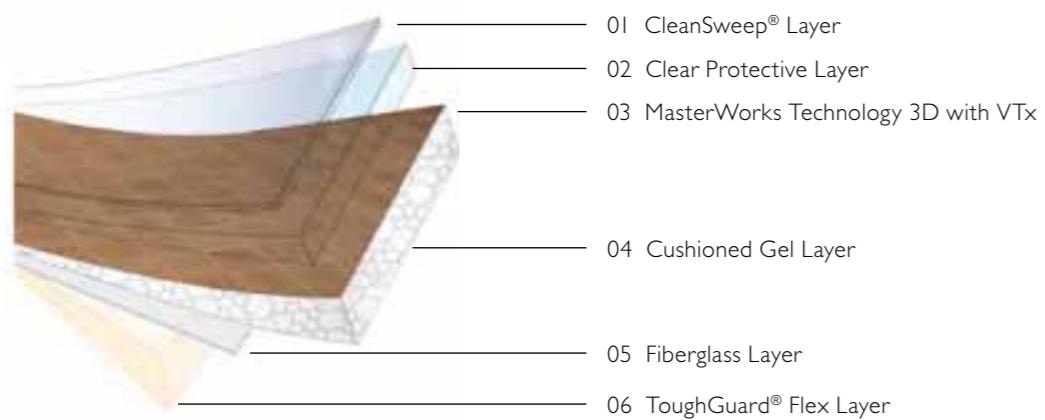
3D printed visuals create cleaner, sharper patterns and improved colour clarity. Improved embossing comes from our exclusive, award-winning **MasterWorks Technology® with VTx™**. Enjoy visually realistic floor designs with a textured coating for an incredibly natural feel, especially for bare feet.

#### SUPERIOR STAIN PROTECTION

The **CleanSweep®G** wear layer with **antimicrobial** protection gives superior stain protection. The CleanSweep wear layer guards against stain and odour-causing bacteria on the flooring surface.

#### EXTENSIVE WARRANTIES

Duality Premium Plus is built to last so long and withstand so much wear that it holds an outstanding **Lifetime Limited Residential Warranty** and a **10-Year Limited Light Commercial Warranty**. A warranty we are confident you will never need to use.



# DUALITY PREMIUM PLUS RANGE

## Wood



DEEP FOREST  
Moccasin Gold  
G6170



DEEP FOREST  
Bradford  
G6171



MEDITERRANEAN WALNUT  
Natural  
G6150



MEDITERRANEAN WALNUT  
Smoke  
G6153

## Tile



AMALFI  
Mocha  
G6022



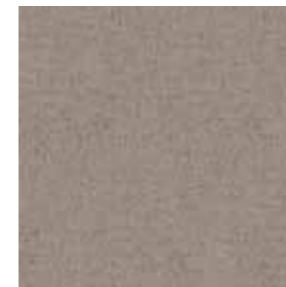
CHAPEL FORGE  
New London Burgundy  
G6032



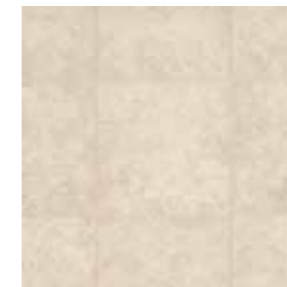
CHAPEL FORGE  
Venetian  
G6031



HAVANA  
Kona  
G6103



MASSIMO  
Fusion  
G6200



CANTERA  
Blanco  
G6050



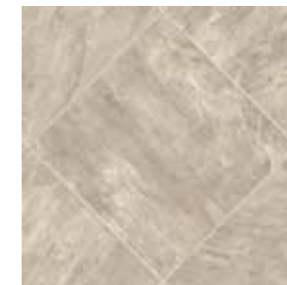
NEW GATE CASTLE  
Element  
G6043



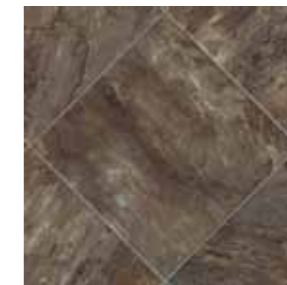
NEW GATE CASTLE  
Nantucket Dune  
G6040



EMPIRE SLATE  
Liberty Gold  
G6221



EMPIRE SLATE  
Woodstock White  
G6220



EMPIRE SLATE  
Adirondack Fall  
G6223

Floors you can stand on all day.

# CUSHIONSTEP™

Longing for the comfort of soft floorings, but the style of stone and wood? An exciting innovation in sheet flooring has arrived. CushionStep has a CushionCore™ backing which gives you the look you want with the unexpected comfort you crave. CushionStep comes in three qualities to give you more budget flexibility. "Good, Better, Best."

## NATURAL STYLE

The look is usually the first priority when choosing a floor, which is why creating amazing realistic versions of the greatest stone and wood is the key to this beautiful range.

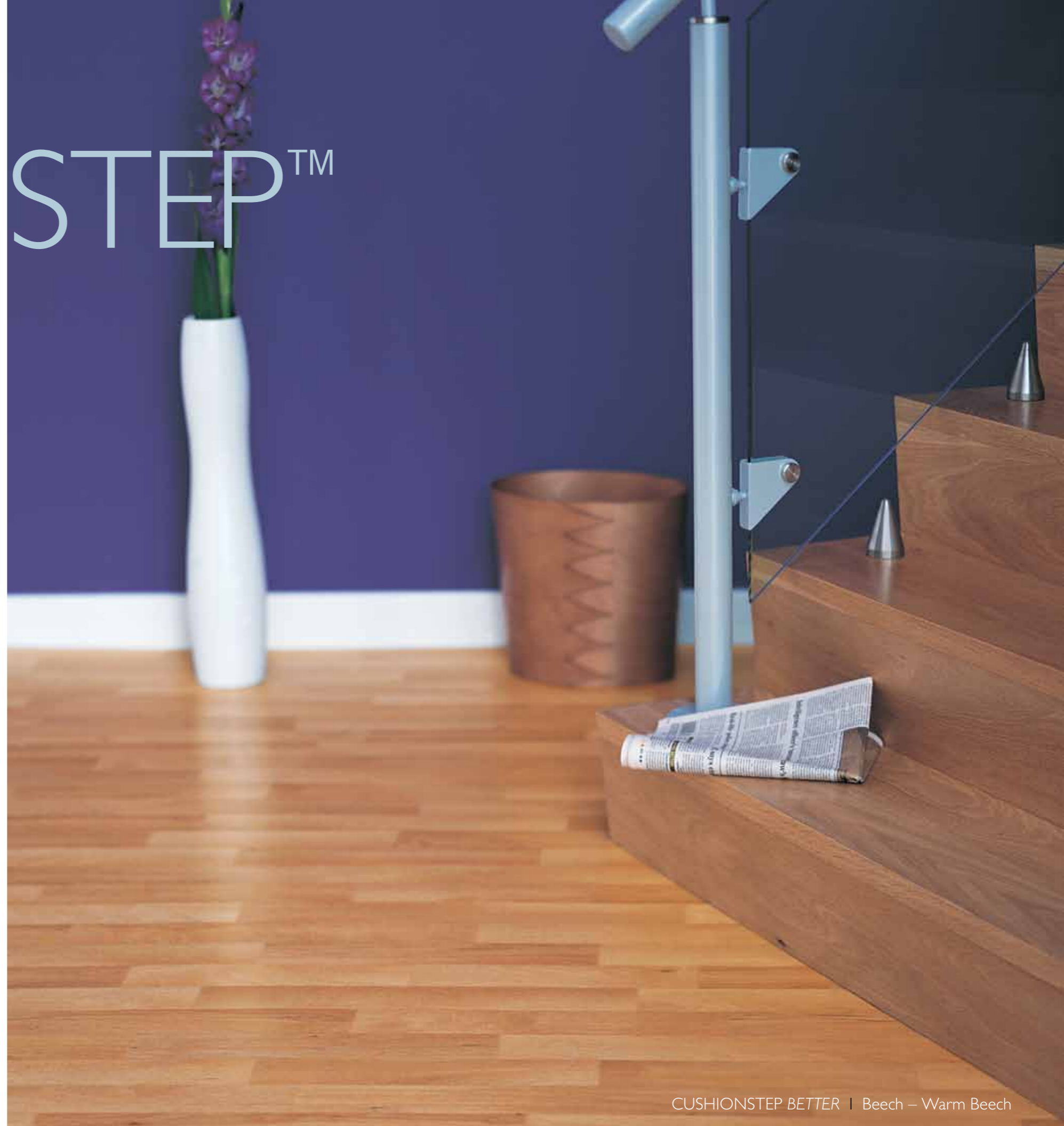
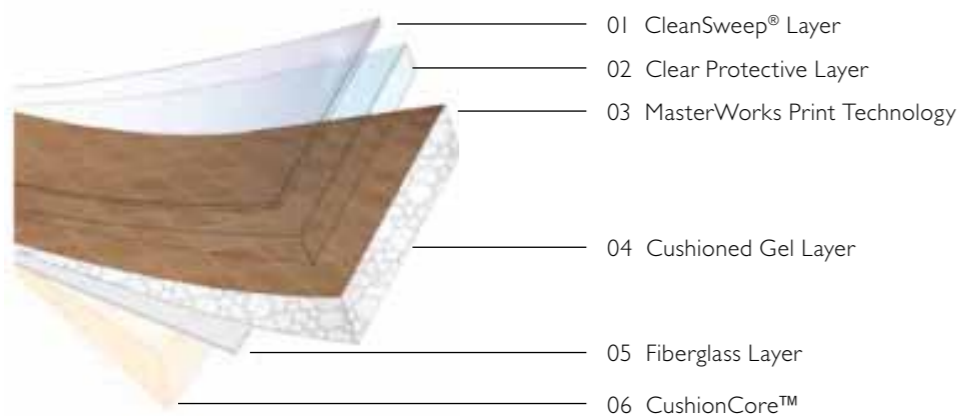
CushionStep *Good* floors are constructed with the award-winning **MasterWorks Technology** that gives improved definition, depth and dimension to design. CushionStep *Better* and *Better* floors also utilise **3D technology** with a variable textured coating (**VTx**) for an incredibly natural feel.

## EASY MAINTENANCE WITH SUPERIOR STAIN PROTECTION

CushionStep *Good* and *Better* floors have the remarkable **CleanSweep® G** Superior stain protection technology. The *Best* floors also have an **antimicrobial** protection that guards against stain and odour-causing bacteria on the flooring surface.

## EXTENSIVE WARRANTIES

CushionStep *Best* floors carry a reassuring **25-year Limited Residential Warranty**. CushionStep *Better* floors have a **15-year Limited Residential Warranty** and CushionStep *Good* floors have a **10-year Limited Residential Warranty**.



# CUSHIONSTEP RANGE

## Best Wood



COUNTRY OAK - Rodeo Brown  
G4024



COUNTRY OAK - Golden Oak  
G4021



RUSTIC TIMBERS - Bleach  
G4101



RUSTIC TIMBERS - Natural  
G4100



RUSTIC TIMBERS - Brown  
G4103

## Better Wood



ANTIQUÉ - Oak Butternut  
G3010



OLD NYACK - Butter  
G3190



BEECH - Warm Beech  
G3050



ANTIQUÉ OAK - Cinnamon  
G3011

## Good Wood



INNSBRUCK - Light Pine  
G2090



INNSBRUCK - Honey Blond  
G2091

## Best Tile



SPANISH SALTILLO - Captiva White  
G4080



SPANISH SALTILLO - Adobe Clay  
G4081



SPANISH SALTILLO - Biscayne Bay  
G4083



SPANISH SALTILLO - Sunbaked  
G4084



LAFAYETTE - Taupe  
G4112



LAFAYETTE - Bronze  
G4111



PERUVIAN SLATE - Pebble Beige  
G4093



PERUVIAN SLATE - Golden Fields  
G4091



PERUVIAN SLATE - Sunrise  
G4094

## Better Tile



MESSINA - Mesa Tan  
G3071



MESSINA - Stone  
G3070



KYOTO - Breeze  
G3100



KYOTO - Brown  
G3104



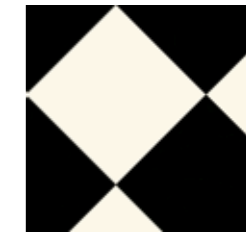
ALVINA - Brownstone  
G3121



ALVINA - Buff  
G3120



LIMESTONE PAVER - Sable  
G3201



PHILMONT Q - Black/White  
G3130

## Good Tile



ALPINE - Moonlight  
G2043



ALPINE - Camel  
G2042



ALPINE - Oyster White  
G2041



NOLT CREEK - Fascination  
G2180



HARRINGTON - Eik  
G2021



MERCHANTS ALLEY - Rain Water Blue  
G2170

The range may be updated so please visit [www.armstrongresidentialfloors.com.au](http://www.armstrongresidentialfloors.com.au) to check on the latest designs available. These swatches are shown as close to the product as printing allows, for actual samples please contact Armstrong.

# WARRANTY GUIDELINES

For full warranty details visit [www.armstrongresidentialfloors.com.au](http://www.armstrongresidentialfloors.com.au)

## Warranty requirements.

Proper installation plays a key role in the performance of Armstrong floors. Installation defects are not covered by our warranty and are the responsibility of your installer. Armstrong floors should be installed according to the Armstrong Guaranteed Installation System. This means that Armstrong installation products specifically designed for Armstrong floors should be used when installing Armstrong floors. If the Armstrong Guaranteed Installation System is followed, we guarantee that, for the specified warranty period, from the date of purchase:

- The floor edges won't curl
- The floor seams won't open
- The floor will stay bonded
- Armstrong adhesives, underlayments, and seam treatments won't stain the floor
- The floor will not crack over underlayment joints

**BEST** ARMSTRONG 20 YEAR LIMITED RESIDENTIAL WARRANTY

**BETTER** ARMSTRONG 10 YEAR LIMITED RESIDENTIAL WARRANTY

The Armstrong 20-year and 10-year limited warranty means that for twenty and ten years respectively, from the date of purchase, your floor:

- Will not rip, tear or gouge from normal household use
- Will not permanently indent when proper floor protectors are used†
- Will not wear through\*
- Will not permanently stain from common household stains
- Will not permanently stain from traffic stains including asphalt driveway sealer
- Will not permanently scuff from shoe soles
- Will not fade or discolour from heat or sunlight
- Will not discolour from moisture or underlayment panels
- Will not contain manufacturing defects

**GOOD** ARMSTRONG 5 YEAR LIMITED RESIDENTIAL WARRANTY

The Armstrong 5-year limited warranty means that for five years from the date of purchase, your floor:

- Will not rip, tear or gouge from normal household use
- Will not permanently indent when proper floor protectors are used†
- Will not wear through\*
- Will not fade or discolour from heat or sunlight
- Will not discolour from moisture or underlayment panels
- Will not contain manufacturing defects

## What will Armstrong do if any of the above happen?

If any of the above should occur within the specified warranty period, Armstrong will either repair the defective area or replace the floor with comparable Armstrong flooring of similar colour, pattern, and quality at our option. And, if your floor was professionally installed, Armstrong will also pay reasonable labour costs for the direct repairs or replacement. Please note that Armstrong will replace or repair a floor discoloured from mold, mildew or alkali one time. If the replacement or repair fails in the same manner a second time, the flooring conditions may not be acceptable for the installation of vinyl sheet flooring.

## What is NOT covered by this warranty?

- Damage caused by fire, flooding or intentional abuse.
- Damage caused by vacuum cleaner beater bar, caster wheels and cutting from sharp objects.
- Loss of gloss/scratching.
- Minor colour, shade or texture variations between samples or printed colour photography and the actual material.
- Only floors graded "regular" are covered by this warranty.
- This warranty applies only to floors installed in owner-occupied or tenant-occupied residences. Commercial installations of residential products are not covered. Construction or installation related damage is not covered.
- Floors discoloured from moisture or underlayment panels after having been repaired or replaced by Armstrong one time, or caused by excessive moisture from sources such as flooding and water leakage, are not covered by this warranty.
- Installation defects are not covered by this warranty.
- Damage caused by abuse such as moving appliances across the floor without adequate protection.

## What should you do if you have a problem?

We want you to be happy with your Armstrong floor. If you're not, call your retail store. They can answer your questions and, if necessary, start to process a claim.

If you have further questions, please call us at 1800 800 518. PLEASE KEEP YOUR RECEIPT OR OBTAIN IT FROM THE ORIGINAL PURCHASER. Armstrong needs the receipt in order to verify date and proof of purchase to resolve any problems that may occur.

## What is excluded from this warranty?

Armstrong excludes and will not pay incidental or consequential damages under this warranty. By this we mean any loss, expense, or damage other than to the flooring itself that may result from a defect in the flooring. No implied warranties extend beyond the terms of this written warranty.

Please note: Some jurisdictions do not allow exclusion or limitations of incidental or consequential damages or limitations on how long an implied warranty lasts, so the above limitations or exclusions may not apply to you. This warranty gives you specific legal rights, and you may also have other rights, which vary from jurisdiction to jurisdiction.

This warranty applies to floors purchased after August 1, 2011.

† The heavier the item, the wider the floor protectors should be.

\* Wear-through is defined as loss of floor design due to normal household use.

# COMPARABLE DATA

	DUALITY™ PREMIUM PLUS	CUSHIONSTEP™ BEST	CUSHIONSTEP™ BETTER	CUSHIONSTEP™ GOOD
<b>REALISTIC VISUALS</b>				
MasterWorks Technology™ 3D with VTx	•	•	•	
MasterWorks Technology				•
<b>EASY MAINTENANCE</b>				
CleanSweep® G with Antimicrobial Protection	•	•		
CleanSweep® G			•	•
<b>PERFORMANCE</b>				
ToughGuard® Flex	•			
CushionCore®		•		
ToughGuard II			•	
ToughGuard				•
<b>THICKNESS</b>				
Overall Thickness	2.125mm	3.1mm	2.5mm	2.0mm
Wear Layer	0.50mm	0.375mm	0.25mm	0.20mm
<b>WARRANTY</b>				
Lifetime Limited Residential + 10-year Limited Light Commercial	•			
25 year Limited Residential		•		
15 year Limited Residential			•	
10 year Limited Residential				•



DUALITY PREMIUM PLUS | Chapel Forge – Venetian

# CARE AND MAINTENANCE

Proper care and maintenance will help ensure your floor looks its best for years to come.

## Immediately after installation.

- If your floor has seams, then for eight hours after seam application, protect the sealed seams on your flooring. This will ensure proper seam bond. If your seams are disturbed before they're dry, permanent damage may result.
- Maintain room temperature at 18°C for 48 hours after installation is completed. This assures proper curing, setting and bonding of products.
- If your floor has been installed with the full-spread installation method, then the adhesive under your floor needs time to thoroughly dry after installation. Therefore, we recommend that you do not scrub or wash your floor for three days.

## Caring for your floor.

- Sweep or vacuum regularly to remove loose dirt, which can scratch your floor. NOTE: We do not recommend vacuums that have a beater bar since it can visibly damage your flooring surface. Additionally, we do not recommend electric brooms with hard plastic bottoms with no padding, as use may result in discolouration and deglossing.
- Never use highly abrasive scrubbing tools on any Armstrong floor.
- Wash your floor regularly with Armstrong Once 'n Done Resilient Floor Cleaner.
- For heavy duty cleaning, use Armstrong New Beginning Resilient Floor Stripper.
- Do NOT use detergents, abrasive cleaners, or "mop and shine" products. These products may leave a dull film on your floor.
- Over time, if the shine on your floor begins to dull, Armstrong Shinekeeper Resilient Floor Finish can be used to renew your floor's shine. Do NOT use paste wax or solvent-based polishes.

- CushionStep flooring, like other types of smooth floors, can become slippery when wet. Allow time for floor to dry after washing. Immediately wipe up wet areas from spills, foreign substances, or wet feet.

## Proactive protection for your floor.

- When moving appliances or heavy furniture, lay a plywood panel on your floor and "walk" the item across it. This protects your floor from scuffing and tears.
- Use floor protectors, such as floor protectors, on furniture to reduce indentation. The heavier the item, the wider the floor protector needed.
- Be careful with rolling casters. They can damage the floor. Therefore, we do not recommend them. If you choose to use them, the double-wheel type is the best option.
- Place a walk-off mat at outside entrances to reduce the amount of dirt brought into your home. We strongly recommend mats without a latex or rubber backing since these backings can cause permanent discolouration on CushionStep Good floors.
- All Armstrong floor care products have been specifically developed to care for Armstrong floors. You may purchase Armstrong floor care products at your local flooring retailer.

**CAUTION:** Most damage to new floors is done when moving kitchen appliances. Caution should be observed so any heavy objects, particularly kitchen appliances, do not gouge and tear material. **When moving heavy objects into place, always use hardboard or underlayment panels to protect floor.** Use strips of hardboard under feet of appliances as they are moved into final position. Tilt appliance slightly to remove strips. To further protect against heavy, sharp-edged furniture and appliance legs, the use of floor protectors is recommended. Your Armstrong retailer can help select the right protectors.

# INSTALLATION GUIDELINES

Before installing vinyl sheet flooring, please read the complete installation instructions found at [www.armstrongresidentialfloors.com.au](http://www.armstrongresidentialfloors.com.au)

## QUICK REFERENCE GUIDE

Installation:	Conform to AS 1884 – 1985
Types of sub-floors:	Concrete and timber, existing non-cushioned vinyl floors.
Installation system:	Full spread
Adhesive:	SV-200
Trowel size:	1.5mm x 1.5mm x 2.5mm
Special precautions:	Do not scrub or wash floors for at least 72 hours after installation.
Recommendations:	Allow to acclimatise to room temperature (18°C) Roll with 45kg roller.

## SUBFLOORS

The condition of the subfloor not only has an important bearing on the appearance of the finished installation, but can dramatically affect the life and serviceability of the floor covering. It is essential therefore that the subfloor be dry, hard, rigid, smooth, level, clean, free of dust and grease. Reference should be made to Australian Standard 1884-1985.

*NOTE: Armstrong is not responsible for any subfloor failures or irregularities such as movement of subfloor, board show through or incorrect subfloor preparation. It is the flooring contractor's responsibility to ensure that the subfloor is acceptable for the installation of Armstrong vinyl sheet flooring.*

## Timber subfloors.

All timber subfloors must have good cross ventilation underneath to prevent distortion and movement of flooring members as well as excessive movement of underlay. Cover timber subfloor with hardboard or approved fibrous cement vinyl flooring underlayment. When using the conventional full spread installation system underlayment should always be installed over structural particleboard using the adhesive and nailing fixing system specified by the manufacturer.

## Concrete subfloors.

Concrete slabs in contact with fill, hardcore or the ground must have a damp-proof membrane to prevent entry of moisture. Water proofing additives and curing compounds do not replace the damp-proof membrane. New slabs should dry for at least one month per 25mm thickness.

When curing compounds, hardeners, sealers, or parting compounds have been used, they have to be completely removed by sanding, sandblasting or grinding prior to the installation of an Armstrong vinyl floor as this will impair the bond of the adhesive. A MOISTURE TEST SHOULD ALWAYS BE CARRIED OUT PRIOR TO INSTALLATION.

## Heated subfloors.

Armstrong vinyl sheet can be installed over heated subfloors. But, it is imperative the surface of the slab does not exceed 28°C. Prior to installation the heating should be turned on for a few days to remove all dampness present in the subfloor. Heating should be turned off 48 hours prior to and during installation and shall not be turned on until 48 hours after the installation is complete, allowing the adhesive to set.

## FULL SPREAD INSTALLATION SYSTEM

### Fitting.

The flooring material should be cut-in around all walls and fixtures using a straight blade knife or an Armstrong S-66 Wall Trimmer.

It is important not to fit the material too tightly to walls, and particularly around corners and architraves. If the material is cut in too tightly it can buckle in the field area of the floor. To avoid the problem it is recommended that the material be allowed to relax and that a gap of approximately 1mm be left between the edge of the material and walls, fixtures and fittings. If such tolerances are unacceptable to the customer it is recommended that Armstrong Feather Edge Skirting (100mm or 150mm high) to be used to cover the gap.

### Seams.

Overlap the adjoining pieces to obtain a pattern match, then double cut the seams dry with a straight blade knife. A seam sealer must be used on all joins to fuse the two halves of material and prevent dirt and water penetrating the seam.

### Adhesive.

To ensure that the installation is successful, Armstrong SV-200 adhesive must be used. This adhesive has been specially formulated for use with all Armstrong vinyl backed sheet flooring in Australian conditions.

The adhesive should be spread with an Armstrong S-891 notched steel trowel (1.5mm wide x 1.5mm deep x 2.5mm apart notches).

The flooring should then be lowered into the adhesive.

*Note: The adhesive should be allowed to 'set up' slightly prior to the material being laid into it. The set up time is critical in allowing the gases and moisture from the adhesive to dissipate. If this is not done bubbles can result in the flooring. This initial set up time will vary depending on climatic conditions, but 20 minutes can be used as a guide.*

The material should then be rolled with a 45kg roller to ensure that the flooring is imbedded properly in the adhesive.

### Clean Up.

Tools, etc. may be cleaned immediately with soapy water. Dry adhesive can be removed with mineral turps.



CUSHIONSTEP BEST | Peruvian Slate – Pebble Beige



This brochure is printed on recycled paper that is Certified Carbon Neutral by The Carbon Reduction Institute (CRI) in accordance with the global Greenhouse Protocol and ISO 14040 framework.



**Armstrong World Industries (Australia) Pty. Ltd.**

29-39 Mills Road, Braeside, Victoria 3195 Australia

For further information and samples:

AUSTRALIA

**Freecall** 1800 800 518

**Head office** 03 9586 5500

**Fax** 07 3809 5508

**Email** residential\_customerservice@armstrong.com

**www.armstrongresidentialfloors.com.au**

Distributed by:

**MJS Floorcoverings**

QLD 07 3347 7300

N QLD 07 4728 8644

NSW 02 9725 5519

ACT 02 6239 1000

VIC 03 9314 2872

TAS 03 6228 1032

**Manag Floorcoverings and Accessories**

WA 08 6240 1000

SA 08 8234 8933

[ Between us, ideas become reality.™ ]

**FLOORING**



CUSHIONSTEP  
BETTER  
Alvina  
Brownstone